

FRAMING YOUR VIEW OF THE BUSINESS

VISIBILITY TO SUPPORT INSIGHTFUL DECISIONS

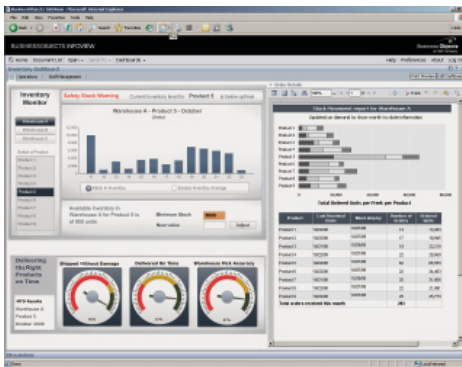


Figure 1: SAP® BusinessObjects™ Dashboard Builder Framework for Reports and Models

Building Composite Dashboards with Layout and Design Tools

Many organizations are building composite dashboard today. This type of dashboard is composed of different types of components – reports, gauges, portal pages, and more. With SAP® BusinessObjects™ Dashboard Builder software, you can design a highly interactive composite dashboard for any user in your organization (see Figure 1). Using drag-and-drop functionality, a user can create a dashboard view without the help of IT staff.

Based on asynchronous JavaScript and XML (AJAX) technology, the layout and design functionality offers flexibility for users in a multitude of ways:

- **An option for personal or corporate dashboards** – You can create and share corporate dashboards with multiple users or give users the power to create their own personal dashboards.

- **Flexibility in managing secured dashboard access** – Administrators can manage user security and content access to enable the deployment of dashboards based on business function, role, or security profile.
- **Support for all SAP BusinessObjects content types** – In an SAP BusinessObjects Dashboard Builder dashboard, you can place all or part of any document or report from SAP BusinessObjects Web Intelligence® software or Crystal Reports® software, a workspace from SAP BusinessObjects Voyager software, a model from SAP BusinessObjects Xcelsius® Enterprise software, an Adobe PDF document, or Web content (through URL linking).
- **WYSIWYG interface for creating and editing dashboard layout** – With little or no training, you can create and share dashboards. SAP BusinessObjects Dashboard Builder provides tools, such as templates, that make it easy to create a dashboard by reusing all the existing content in your business intelligence deployment.

Simplifying the Creation of Interactive Dashboards

The latest version of SAP BusinessObjects Dashboard Builder introduces the concept of interportlet communication. With this enhancement, it is now possible to enable dashboard components to communicate with each other and exchange information. For example, a user can interact with an SAP BusinessObjects Xcelsius Enterprise model and have those same changes refreshed

SAP® BusinessObjects™ Dashboard Builder software provides an intuitive framework to display multiple dashboards and reports. With a layout for consolidating the most relevant business-intelligence content types, the software gives users visibility across the organization to support insightful decision making.



An interactive dashboard framework gives users the flexibility to further personalize that framework and set up dashboards, reports, models, and other content to match the way they work.

and reflected in other models or in documents from SAP BusinessObjects Web Intelligence or Crystal Reports that are placed in the same dashboard page. The net effect is a dashboard with visual analytics in portlets that harmoniously change based on clicks made in one portlet (see Figure 2).

With the option to design free-form dashboards or use standard templates, dashboard designers have more flexibility to create dashboards that better serve the needs of business users.

SAP BusinessObjects Portfolio of Solutions

SAP BusinessObjects Dashboard Builder is part of the SAP BusinessObjects portfolio of solutions. These solutions help you optimize business performance by enabling you to close the gap between strategy and execution while addressing business and compliance risks. To manage operations effectively, contain costs, and meet customer demands, you need comprehensive business solutions

that provide complete and integrated business information. With insight into every aspect of the business, you can monitor performance, spot inefficiencies, and identify opportunities for growth.

In the face of growing compliance challenges – including environmental, health, financial, trade, border security, waste disposal, and specific customer requirements – you need to build controls and checks into your business processes. Supporting regulatory compliance also requires these processes to be fully transparent.

Turn Insight into Strategy

SAP BusinessObjects solutions are open, action-oriented, and connected.

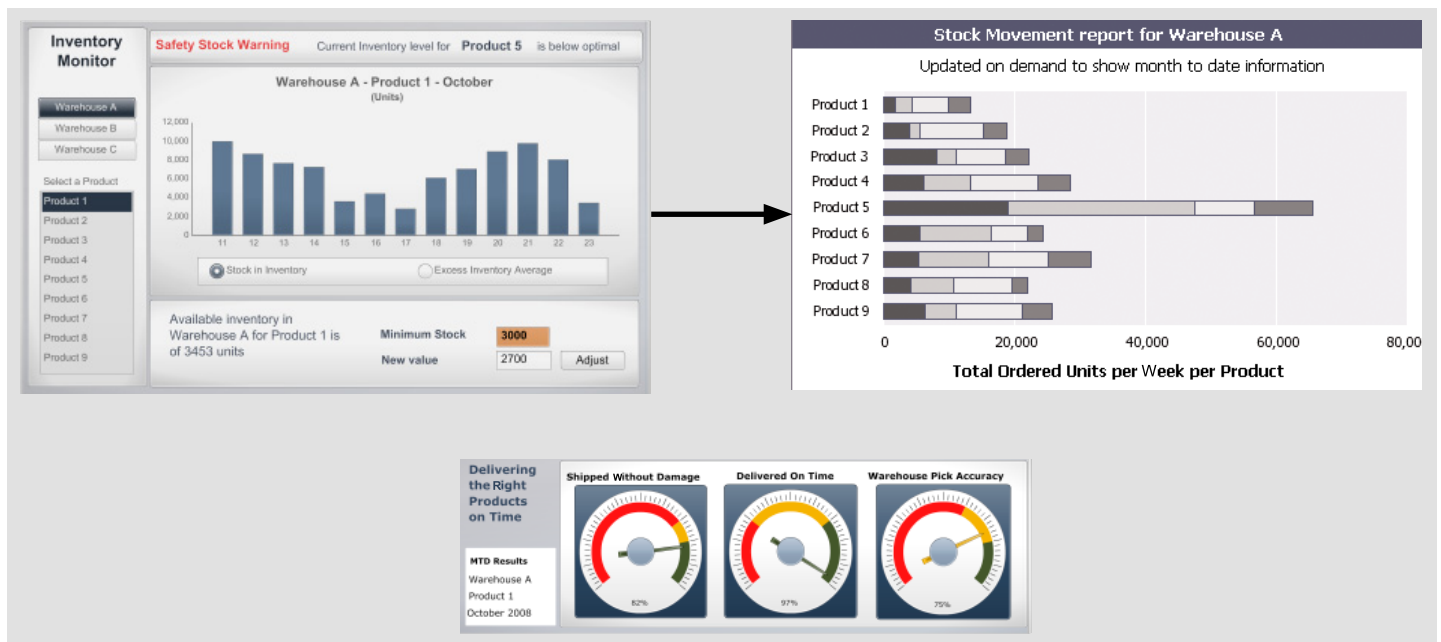


Figure 2: Parameter Changes Passed to Other Content Types After Interaction with Model



SAP BusinessObjects Dashboard Builder is part of the SAP BusinessObjects portfolio of solutions. These solutions help you optimize business performance by enabling you to close the gap between strategy and execution.

They deliver a complete, intuitive profile of business performance using any data from any application and any platform, and they ease collaboration to improve decisions and resolve issues. The solutions automatically detect significant risks and performance issues within and beyond the business.

With the SAP BusinessObjects portfolio, you gain broader insight and can align strategy, optimize decisions, and improve risk management, regardless of underlying transactional systems. The SAP BusinessObjects portfolio of solutions provides consistent, integrated solutions that are portable and interoperable, transforming the way you work by connecting people and information and optimizing business performance. In short, SAP BusinessObjects solutions help you turn insight into strategy and strategy into operational decisions ready for execution.

Find Out More

To learn more about how SAP BusinessObjects Dashboard Builder can support your business users, please contact your SAP representative or visit us on the Web at www.sap.com/sapbusinessobjects.

Summary

With SAP® BusinessObjects™ Dashboard Builder software, you can design an interactive dashboard framework for any type of business user. Users have the flexibility to further personalize that framework and set up dashboards, reports, and other content to match the way they work. With easy access to simplified visuals, users have the information they need to focus on higher-value activities.

Business Challenges

- Uncertainty about reliability of information to support decision making
- Too much time spent piecing together bits of data
- Lack of a consolidated view of business performance

Key Features

- **Analysis and reporting framework** – Track business performance with the help of an intuitive dashboard framework
- **Interportlet communication** – Propagate any changes from one portlet container to others in the same dashboard
- **Drag-and-drop functionality** – Enable users to build or edit dashboards without the help of IT staff

Business Benefits

- **Better-informed decisions** through enterprise-wide access to relevant business information in a structured and personalized dashboard view
- **Increased confidence in decisions** that are based on a consolidated view of business performance across the organization
- **Reduced cost and time** thanks to an intuitive user interface
- **Improved productivity** for both IT and business users as they focus on higher-value activities

For More Information

Call your SAP representative, or visit us on the Web at www.sap.com/sapbusinessobjects.

50 093 018 (08/12)

©2008 by SAP AG.

All rights reserved. SAP, R/3, xApps, xApp, SAP NetWeaver, Duet, PartnerEdge, ByDesign, SAP Business ByDesign, and other SAP products and services mentioned herein as well as their respective logos are trademarks or registered trademarks of SAP AG in Germany and in several other countries all over the world.

Business Objects and the Business Objects logo, BusinessObjects, Crystal Reports, Crystal Decisions, Web Intelligence, Xcelsius, and other Business Objects products and services mentioned herein as well as their respective logos are trademarks or registered trademarks of Business Objects S.A. in the United States and in several other countries all over the world. Business Objects is an SAP company.

All other product and service names mentioned are the trademarks of their respective companies. Data contained in this document serves informational purposes only. National product specifications may vary.

These materials are subject to change without notice. These materials are provided by SAP AG and its affiliated companies ("SAP Group") for informational purposes only, without representation or warranty of any kind, and SAP Group shall not be liable for errors or omissions with respect to the materials. The only warranties for SAP Group products and services are those that are set forth in the express warranty statements accompanying such products and services, if any. Nothing herein should be construed as constituting an additional warranty.