

SAP® BusinessObjects™ METADATA MANAGEMENT

BUSINESS INTELLIGENCE YOU CAN TRUST

Do decision makers in your organization doubt the accuracy of their reports because they are frustrated with outdated information, unsure of the origin of the information, or lack visibility into the related data calculations? Having reliable business intelligence (BI) is more important than ever in today's highly competitive marketplace. Data traceability is also essential under regulations such as the U.S. Sarbanes-Oxley Act (SOX) that require the officers of public companies to confirm the accuracy of their financial statements.

As the demand for BI grows, so do the available data sources, data warehouses, and BI reports that you depend on for strategic business decisions. However, separate departmental deployments of BI solutions have

created silos of data, making it significantly more difficult to manage the information you need. To prevent unforeseen business impacts, data architects and report designers must proactively determine the impact that changing data sources might have on the intelligence environment.

SAP® BusinessObjects™ Metadata Management software is an information management solution that provides reliable metadata for change impact and data lineage analysis and usage auditing. The software collects and unifies metadata from disparate tools and sources into a single repository (see Figure 1). This includes metadata from BI systems; extract, transformation, and load (ETL) products; and from relational databases, modeling tools, and third-party sources.

SAP® BusinessObjects™ Metadata Management software lets you view and analyze metadata through a thin-client Web application for better understanding of relationships between metadata objects, end-to-end impact analysis, report-to-source data lineage, and effective management of business intelligence projects.

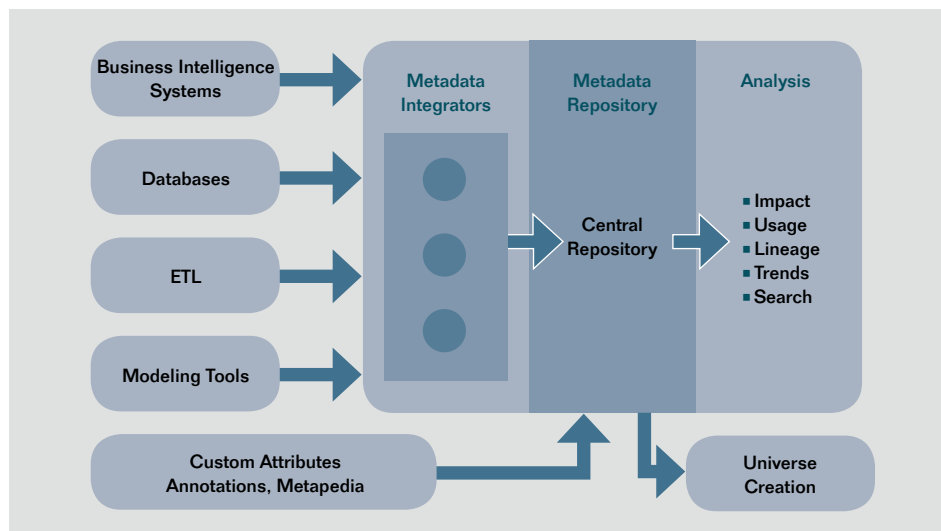


Figure 1: Functional Overview of SAP® BusinessObjects™ Metadata Management



Robust Metadata Tools for Sound Decision Making

Metadata intelligence uses metadata for a given domain to discover, understand, leverage, and manage applications and resources in that domain. It involves applying metadata in a business context, not just collecting and cataloging metadata as most solutions for metadata management do. Like BI, metadata intelligence requires consolidating and relating pertinent information in a central repository for business decision making. In addition, metadata intelligence helps users understand, audit, and analyze the entire business intelligence deployment – from data sources to BI reports. Metadata intelligence can help you maximize scarce IT resources and minimize custom development.

SAP BusinessObjects Metadata Management provides the foundation for a comprehensive metadata intelligence strategy. The software includes tools for:

- Metadata integration and consolidation
- Change impact and data lineage
- Audits of business intelligence user privileges
- Integration with an SAP BusinessObjects reporting portal
- Annotating, tagging, and supplementing metadata
- Advanced searches

Metadata Integration and Consolidation

SAP BusinessObjects Metadata Management consolidates and integrates disparate metadata into an open, relational repository. You can consolidate metadata from your various databases, modeling tools (such as

ERWin), ETL products, and BI solutions. The software can also help you incorporate additional business metadata with existing objects and maintain that data. It includes comprehensive functionality for metadata browsing and searching, as well as multi-language metadata support.

Change Impact and Data Lineage

It is key that you understand how changes in data sources can impact your data warehouse, reports, and BI deployment. The impact analysis functionalities in SAP BusinessObjects Metadata Management help you recognize the relationships between data sources, targets, and universes – and their respective documents – and thus the effect of changes to those relationships. Data lineage analysis helps you identify which sources provided the data for specific reports and see the data transformations, thereby increasing end-user confidence and providing a more accurate picture of your data architecture.

You can trace the lineage of data from an end-user report back to its original data source. Such visibility can help you make more accurate business decisions and estimate the cost-of-change impact – which in turn can reduce your maintenance costs.

Audits of Business Intelligence User Privileges

The software can also analyze the impact of data changes on users and their associated privileges and permissions. You can analyze the universes and reports that a user or user group has access to, along with the



permissions associated with this access, to determine:

- Who is affected by changes, and what BI information a user can access
- What users or user groups are affected by changes to specific tables, columns, universe objects, and reports
- What privileges a user or user group has for accessing reports or data universes

Integration with an SAP BusinessObjects Reporting Portal

SAP BusinessObjects Metadata Management lets you view a data lineage diagram for any BI object directly through an SAP BusinessObjects software reporting portal. You can see the data lineage diagram for any object associated with reports from SAP BusinessObjects ad hoc query and reporting tools by clicking on the lineage link for that particular object. On the data lineage diagram, you can place the mouse over the object to get additional details (see Figure 2).

Annotating, Tagging, and Supplementing Metadata

You can add information to existing objects via a Web application that organizes metadata from different sources into a directory structure that allows you to easily navigate and analyze the metadata. There is also support for adding business descriptions, assigning a data steward to objects, rating object relevancy, linking objects to Web sites, and tagging objects that contain sensitive information. Supplementary metadata annotation lets you link user notes to any object. This essentially means that you can add “metadata to metadata” or build a Wiki that captures information that can be used later.

Advanced Searches

An advanced search function lets you add multiple conditions to narrow your metadata search. You can perform a “fuzzy match” that returns objects that resemble any of the words in a “value”

field. You can define each condition by object type, field, word match, or value.

Benefits of Metadata Management

SAP BusinessObjects Metadata Management helps you optimize your BI environment and infrastructure to keep pace with demands for reliable information within your enterprise. You can overcome the difficulties of managing metadata from various data sources, technologies, and systems by consolidating and integrating metadata into an open, relational repository. With this support, you get:

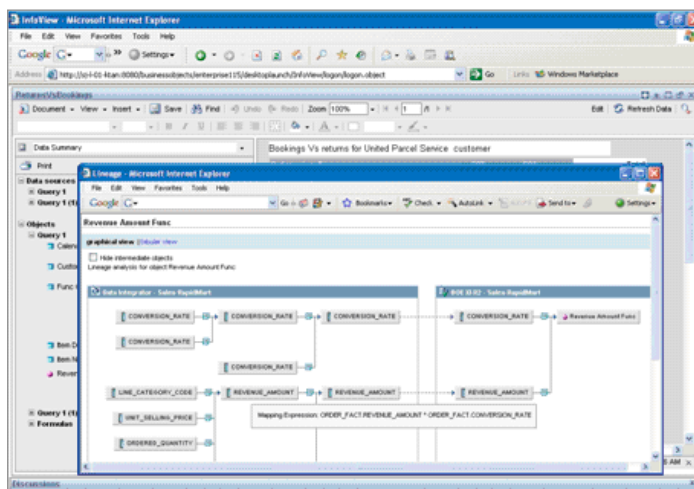
- A more accurate picture of your entire BI environment
- The ability to search, explore, and understand your information assets both horizontally (across different systems) and vertically (from reports to their individual data elements)
- Tools for the proactive analysis of the impact of various changes in data sources on specific reports and users

By streamlining your IT workload, reducing project outlays, and improving operational efficiency, SAP BusinessObjects Metadata Management can reduce the total cost of ownership of your BI solutions.

- Data traceability from reports to their data sources

By giving users across the enterprise a common, consistent, and current understanding of essential metadata traceability, the software can significantly improve decision making and regulatory compliance. By streamlining your IT workload, reducing project outlays, and improving operational efficiency, SAP BusinessObjects Metadata Management can reduce the total cost of ownership of your BI solutions.

Figure 2: More Details from a Mouse-Over on the Data Lineage Diagram



Manage Information More Effectively
SAP BusinessObjects Metadata Management brings all of your metadata together in one place to deliver reliable data for compliance, internal controls, and decision making. To learn more about SAP BusinessObjects Metadata Management, visit our Web site at www.sap.com/solutions/sap-businessobjects/large/intelligenceplatform/im/metadata-management/.

Summary

SAP® BusinessObjects™ Metadata Management software provides reliable data for change management analysis and usage auditing. The software collects and unifies metadata from disparate tools and sources into a single repository. By bringing all of your metadata together to deliver reliable data, you are in a better position to meet demands for compliance and internal controls, and to support sound business strategies.

Challenges

- Confidence in reports used for strategic decision making Information timeliness
- Lack of visibility into information sources and related calculations
- Management of information from disparate sources
- Effective impact analysis for changes in data sources

Supported Business Processes and Software Functions

- **Metadata integration and consolidation** – Manage disparate metadata in an open, relational repository
- **Change impact and data lineage** – Understand the relationships between data sources, targets, and universes (and their respective documents), as well as the effect of changes to those relationships
- **Audits of business intelligence (BI) user privileges** – Analyze the impact of data changes on users and their associated privileges and permissions
- **Integration with an SAP BusinessObjects reporting portal** – View a data lineage diagram for any BI object directly through an SAP BusinessObjects portal
- **Advanced searches** – Add multiple conditions to narrow your metadata search

Business Benefits

- **Consolidation and integration of metadata** into an open, relational repository
- **A more accurate picture** of your entire business intelligence environment
- **Greater information reliability**
- **Improved decision making**
- **Enhanced compliance**
- **Reduced total cost of ownership** for BI solutions through a streamlined IT workload, reductions in project outlays, and improved operational efficiency

For More Information

To learn more about SAP BusinessObjects Metadata Management software and information management solutions from SAP, visit our Web site at www.businessobjects.com/product/eim/metadata_management.asp.

50 089 019 (09/02)

©2009 by SAP AG.

All rights reserved. SAP, R/3, xApps, xApp, SAP NetWeaver, Duet, PartnerEdge, ByDesign, SAP Business ByDesign, and other SAP products and services mentioned herein as well as their respective logos are trademarks or registered trademarks of SAP AG in Germany and in several other countries all over the world.

Business Objects and the Business Objects logo, BusinessObjects, Crystal Reports, Crystal Decisions, Web Intelligence, Xcelsius, and other Business Objects products and services mentioned herein as well as their respective logos are trademarks or registered trademarks of Business Objects S.A. in the United States and in several other countries all over the world. Business Objects is an SAP company.

All other product and service names mentioned are the trademarks of their respective companies. Data contained in this document serves informational purposes only. National product specifications may vary.

These materials are subject to change without notice. These materials are provided by SAP AG and its affiliated companies ("SAP Group") for informational purposes only, without representation or warranty of any kind, and SAP Group shall not be liable for errors or omissions with respect to the materials. The only warranties for SAP Group products and services are those that are set forth in the express warranty statements accompanying such products and services, if any. Nothing herein should be construed as constituting an additional warranty.