

XCELSIUS 2008 WHAT'S NEW

Embrace the exciting new features in Xcelsius 2008 and create superior data visualizations, faster!

New in Xcelsius 2008

Faster, easier creation of data visualizations

New features and visualization components

Integrations with Crystal Reports 2008, BusinessObjects Enterprise, and Adobe products

Software Development Kit

SEE YOUR BUSINESS IN A WHOLE NEW LIGHT!

Xcelsius® 2008 from Business Objects, an SAP company, delivers next-generation data visualization tools that let users of different skill levels in small, mid-size, and enterprise companies to transform complex business data into actionable visual information. Xcelsius 2008 gives you the power of what-if analysis to shed light on any possible business decision.

Xcelsius 2008 makes it even easier for you to create data presentations and dashboards from personal and corporate data sources by providing the following key benefits:

- Improved work flows
- New components and features
- New data connectivity and integration options
- Flexible design and customizations capabilities

Improved Work Flows

- **Redesigned User Interface** (Figure 1). The Xcelsius user interface has been re-architected using Adobe Flash 9 and Adobe Flex technology. The object browser, property windows, menus, and tool bars have been completely redesigned in order to make it easier for you to create data visualization and get better results faster.
- **Integration of the Excel Workflow.** The Excel data mapping process is fully integrated inside the Xcelsius designer tools, eliminating any need to alternate back and forth between Microsoft Excel and the designer. While an Excel spreadsheet is a supported data source, you will never need to re-import a spreadsheet to adjust formulas or formats.
- **Copy and Paste.** Increase your productivity by copying and pasting components between different instances of Xcelsius.

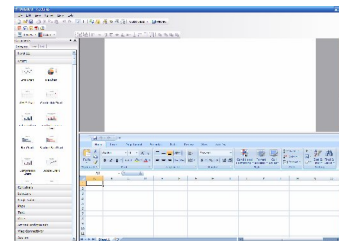


Figure 1: Redesigned User Interface

New Components

- **Tree Map Chart** (Figure 2). This chart enables you to display multiple dimensions of a dataset using size and color within a space-constrained environment.
- **History Component.** This component enables you to provide a simple method for your end users to track previous data updates, queries, and so on, right from the Xcelsius visual model. The History component captures a single value (cell) and inserts it into a contiguous row/column of data, based on a trigger or



Figure 2: Tree Map Chart

time interval.

- **Tab Set Container** (Figure 3). This component enables you to easily create multi-tab dashboards, without writing any Excel logic, for dynamic visibility configurations of the dashboard.
- **Panel Container**. This component makes it possible for you to group multiple components into a single, well-organized scrollable container.
- **Trend Analyzer**. Empower your end users to quickly spot trends and patterns in your company data. This component automatically inserts linear, logarithmic, polynomial, power or exponential statistical calculations into charts, tables, and other components at runtime.
- **Reset Button**. Take advantage of this component to save your end users from ever needing to reopen or reload Xcelsius models just to see the original data in the model. They can quickly reset to the original state of the visual model with a click of a button.
- **Print Button**. Create and share data presentations and dashboards that look stunning even on paper. Take advantage of the new print button to print Xcelsius models in high-quality format. Since the print button always prints the latest state of the model, you don't have to worry about losing your what-if scenario analysis or live data refresh when printing your models.
- **Maps**. Take advantage of our comprehensive map library to create geographical representation of your data. The map library includes maps of countries for various geographical areas of the world. Each country is further divided into its appropriate subdivisions, such as state, province, county, and so on.
- **Connection Refresh Button**. Simplifies the task of refreshing data in Xcelsius visual models for your end users by enabling them to refresh all external data connections and retrieve the latest data directly from the data source – with a click of a button.

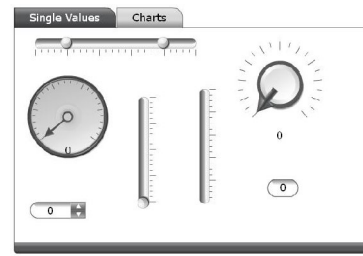


Figure 3: Tab Set Container

New Features

- **Dual Y-Axis Option** (Figure 4). This feature enables you to plot s series on either the primary or the secondary axis. It's available on line, column, stacked column, bar, stacked bar, combination, chart, area, and stacked area charts.
- **Alerts in Selectors**. This feature allows you to use existing alerting methodology to configure indexed-based selectors (such as list box or ticker) to display alerts icon for each label. The alerts icons provide a quick and easy way for letting end users know when a predefined value has been reached, and they point them in the right direction for root-cause analysis.
- **Data Manager**. In an effort to eliminate the time-consuming task of managing multiple data connection buttons, we have created a central location where you can create and manage all of the external data connections for your visual models.



Figure 4: Dual Y-Axis Option

New Data Connectivity and Integration Options

- **One-Click Export to BusinessObjects Enterprise**. Enjoy a trouble-free management for your Xcelsius models via saving and exporting your Xcelsius models to BusinessObjects Enterprise platform with a click of a button.

- **Crystal Reports 2008 Enhanced Integration** (Figure 5). Create interactive charts and what-if scenario models for your Crystal reports. This enhanced integration automates the process of binding your report data to Xcelsius visual models – eliminating hours of manual coding.



Figure 5: Embed Xcelsius Analytics in Crystal Reports 2008

- **Lifecycle Management.** Leverage BusinessObjects Enterprise lifecycle management to easily move Xcelsius models from development to production environments.
- **IBM WebSphere Portal Integration Kit.** Integrate Xcelsius dashboards and content into your WebSphere Portal. Xcelsius allows you to easily turn Xcelsius dashboards into WebSphere portlets without coding, and it enables the creation of complex dashboards that interact across portlets.
- **Connectivity to Adobe LiveCycle Data Services.** Create operational dashboards off of your real-time transactional data sources, and reduce network congestion by leveraging Adobe LiveCycle Data Services to broadcast data to multiple dashboards in real-time.
- **Flynet Web Service Generator.** This point-and-click application allows you to access and expose company data from any ODBC data source, such as Microsoft Access and SQL Server, for consumption in Xcelsius models – without writing any SQL code.

Flexible Design and Customization Capabilities

- **Themes** (Figure 6). Customize the look and feel of your data presentations and dashboards with prebuilt themes and color palettes.
- **Software Development Kit (SDK).** Create your own custom visualization component and data connectors for use with Xcelsius by taking advantage of Xcelsius SDK and Adobe Flex.



Figure 6: New Themes

AVAILABILITY

To learn more about Xcelsius 2008 products or to download a free trial, please visit:

<http://www.businessobjects.com>

businessobjects.com



© 2008 Business Objects. All rights reserved. Business Objects owns the following U.S. patents, which may cover products that are offered and licensed by Business Objects: 5,555,403; 5,857,205; 6,289,352; 6,247,008; 6,490,593; 6,578,027; 6,831,668; 6,768,986; 6,772,409; 6,882,998; 7,139,766; 7,299,419; 7,194,465; 7,222,130; 7,181,440 and 7,181,435. Business Objects and the Business Objects logo, BusinessObjects, Business Objects Crystal Vision, Business Process On Demand, BusinessQuery, Crystal Analysis, Crystal Applications, Crystal Decisions, Crystal Enterprise, Crystal Insider, Crystal Reports, Desktop Intelligence, Inight, the Inight Logo, LinguistX, Star Tree, Table Lens, ThingFinder, Timewall, Let there be light, Metify, NSite, Rapid Marts, RapidMarts, the Spectrum Design, Web Intelligence, Workmail and Xcelsius are trademarks or registered trademarks in the United States and/or other countries of Business Objects and/or affiliated companies. All other names mentioned herein may be trademarks of their respective owners. Part # WS512-A